

Luxembourg today

A launchpad for digital
healthcare in the heart of
Europe



A changing approach to health



OUR MISSION

The Luxembourg Institute of Health is a precision medicine institute. We aim at generating direct and meaningful impact on people's health.

OUR VISION

To become a leading European institute for precision medicine.

OUR PERFORMANCE

Times Higher Education: LIH #15 worldwide, #7 Europe
(non-academic institutions)



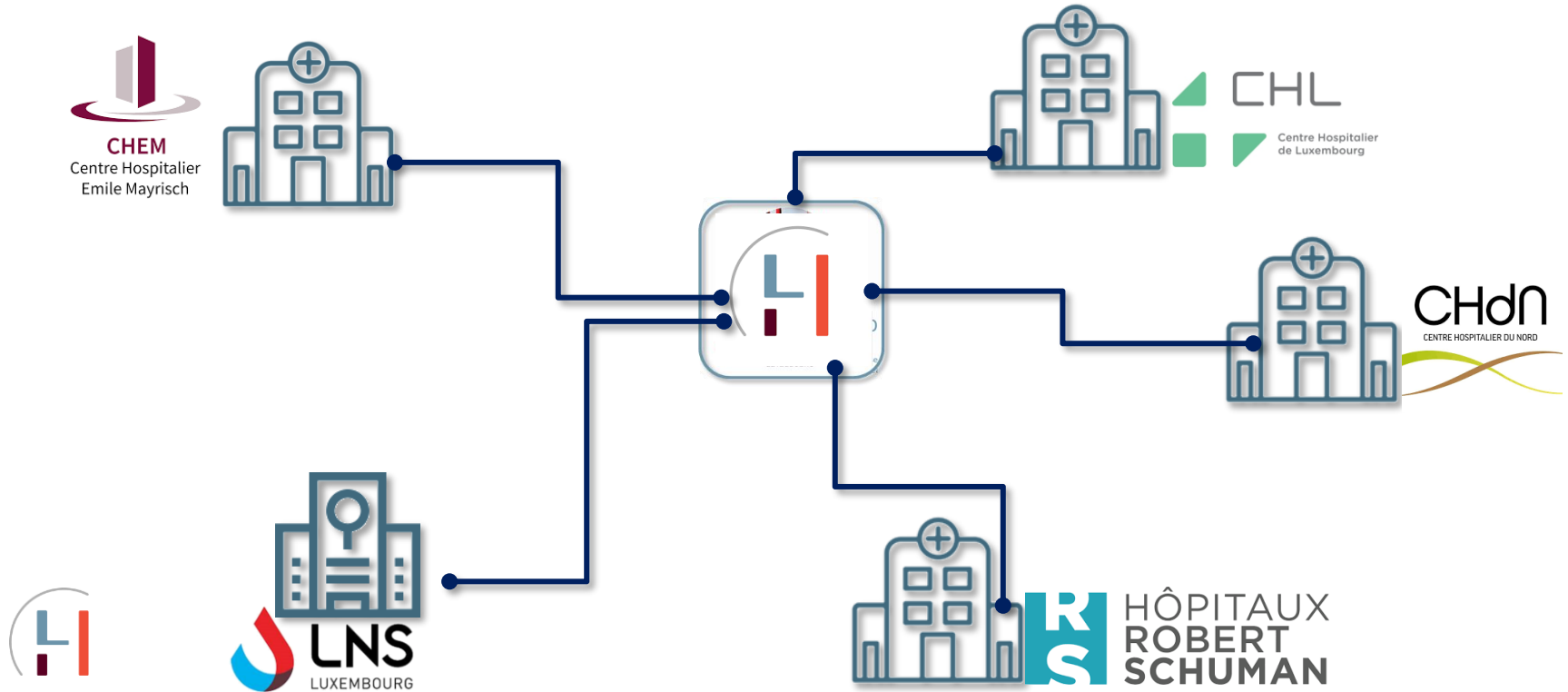
A changing approach to health



A changing approach to health



LIH anchoring a shared clinical research capacity....



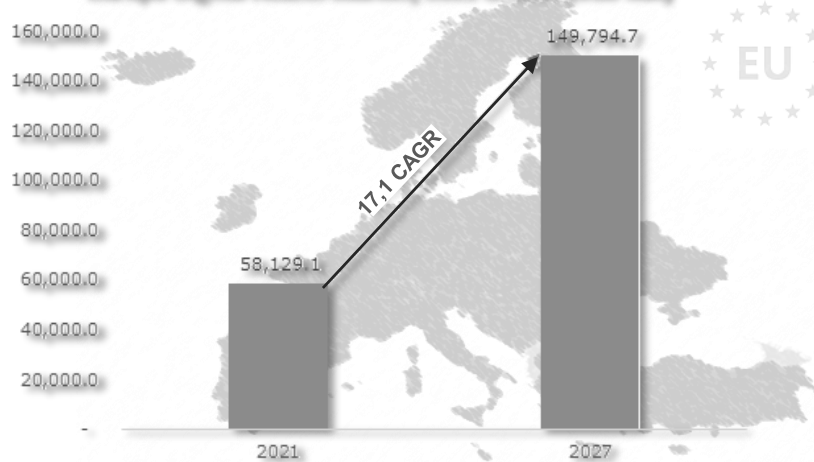


TRENDS AND CONTEXT IMPACTING ON MEDICAL RESEARCH



potential of the digital health market in Europe

Europe Digital Health Market, 2021 & 2027 (USD Mn)



447.700.000

insured inhabitants 2021

- Public, centralized health insurance systems
- Excellent health care systems
- High quality data
- GDPR as a potential upside

Aiming for a patient centric data model

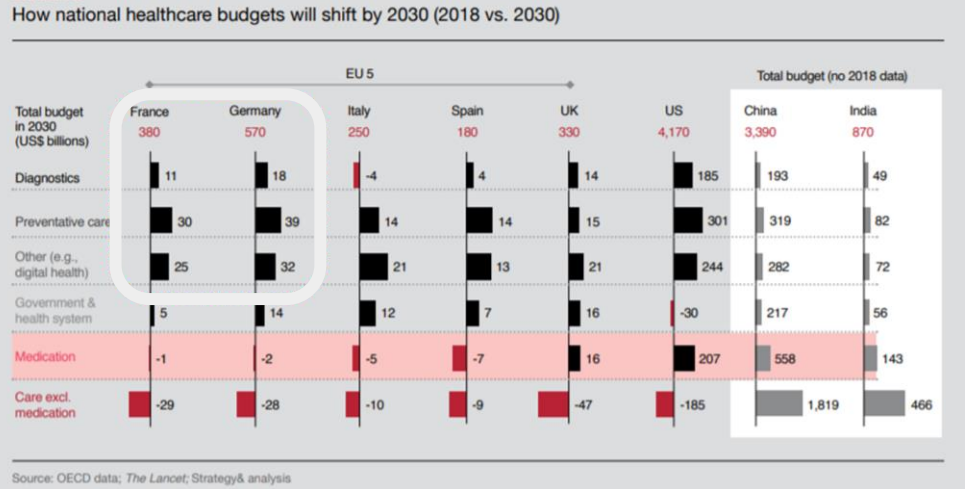


A changing approach to health

A REPOSITIONING OF RESEARCH IN THE MEDIUM TERM

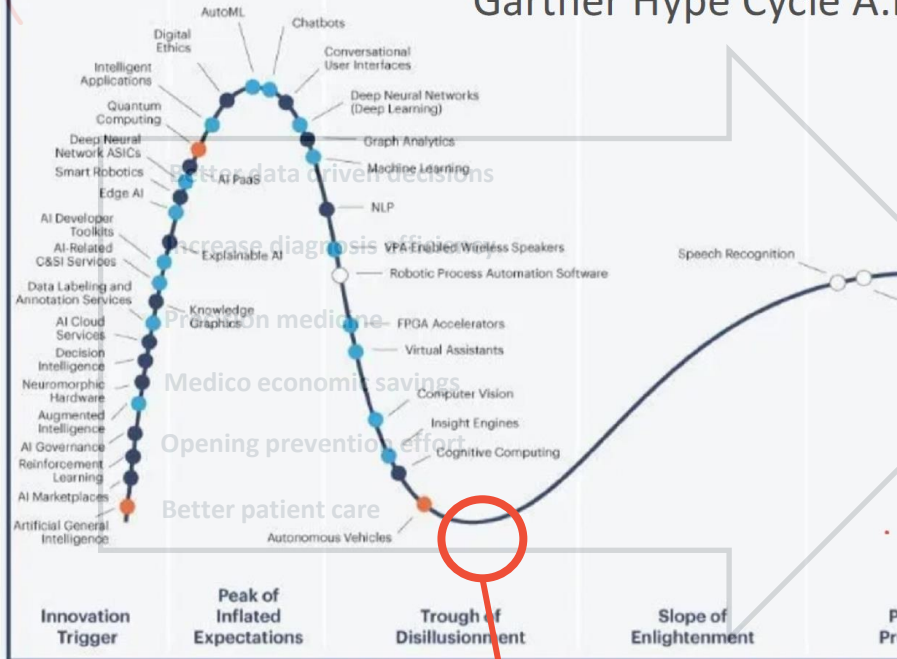
The future biomedical research has to impact in the areas of:

- personalized medicine
- smart diagnostic
- precision therapy
- disease prevention



A.I. in Healthcare

Gartner Hype Cycle A.I. 2019



IBM - Watson Health

- Truven insurance database
300Mio individuals
- Phytel Electronic health records
50Mio patients
- Memorial Sloan Kettering

7000 Employees
\$ 5,000,000,000

IBM's Watson supercomputer recommended 'unsafe and incorrect' cancer treatments, internal documents show

IBM Watson Oncology

A.I. in Healthcare: Clean data

AI models are only as good as the data they are trained on

Clean data:

Reduced biases: Unprocessed data may contain biases and inconsistencies that can propagate through AI systems.

Enhanced patient safety: Inaccurate or incomplete data can lead to incorrect diagnoses, treatments, or predictions, potentially harming patients..

Faster decision-making: Clean data simplifies the process of analysis and decision-making, Improved interoperability:

Interoperability: Clean and standardized data facilitates seamless communication and data exchange between different healthcare systems, enhancing interoperability and collaboration.

Scalability: Clean data ensures that AI models can be effectively scaled

Build trust in AI systems among healthcare professionals and patients



producing clean structured data
with “prospective” patient cohorts

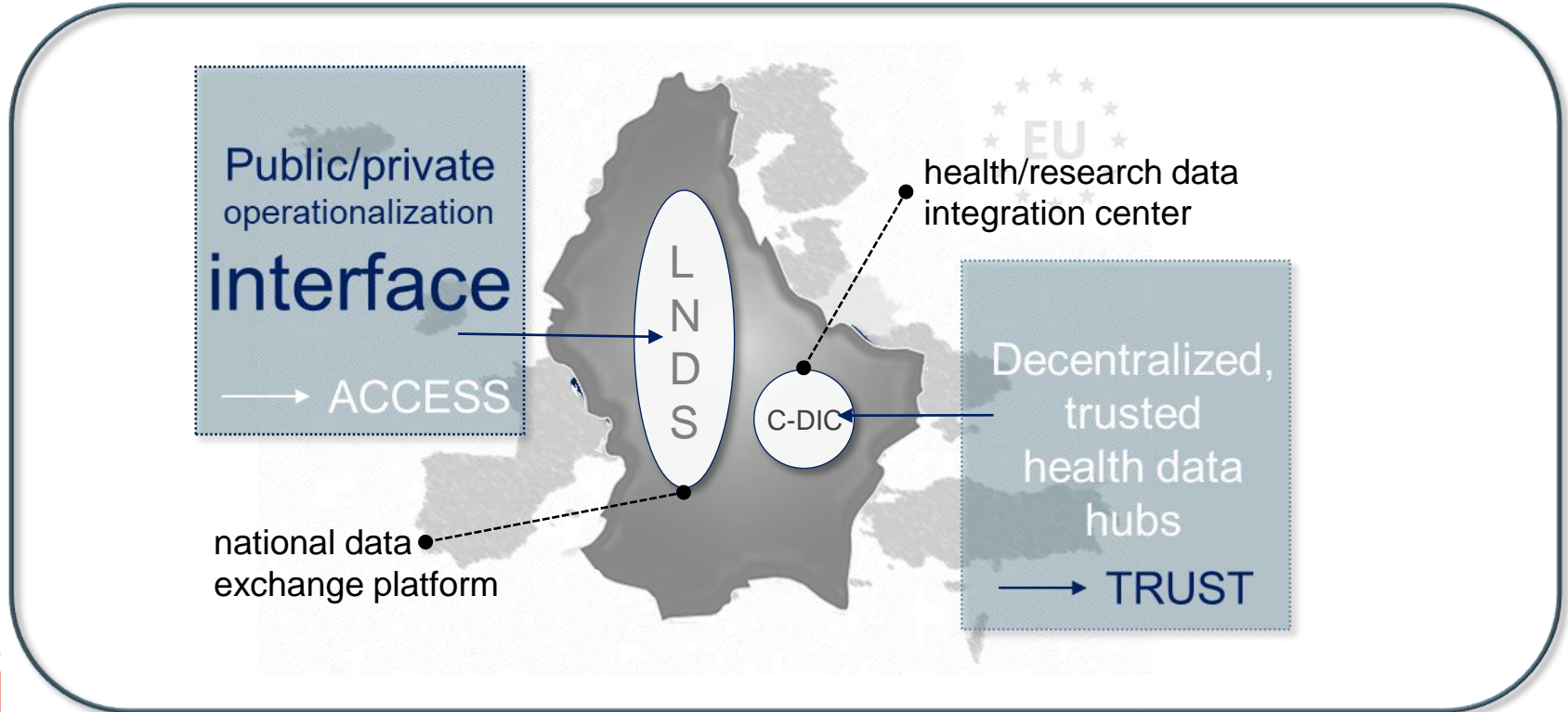


LIH STRATEGY TOWARDS DATA DRIVEN IMPACT ON PATIENTS

the building blocks:



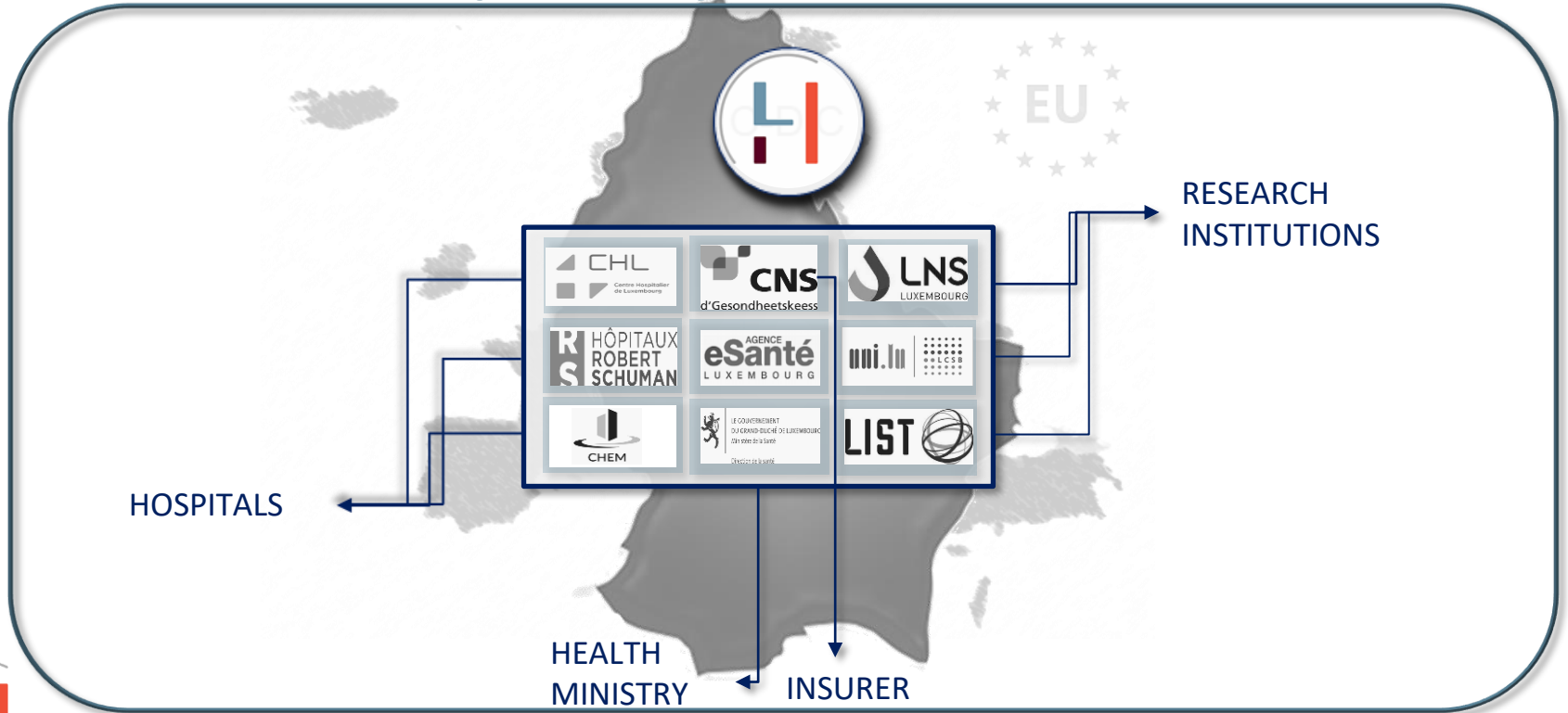
Integrating Luxembourg's Digital Strategy



secure and regulated access to health data provides planning safety for use

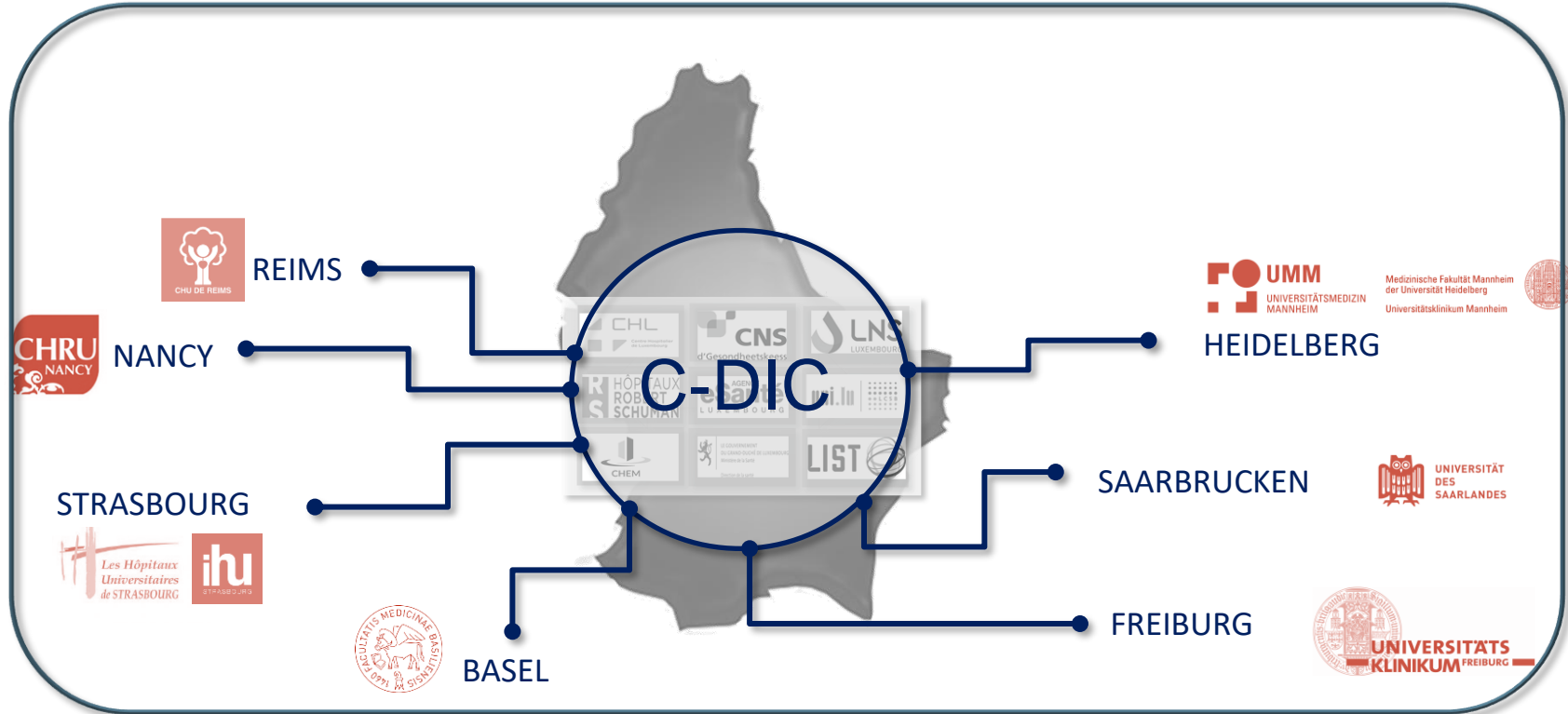


Internal data interoperability



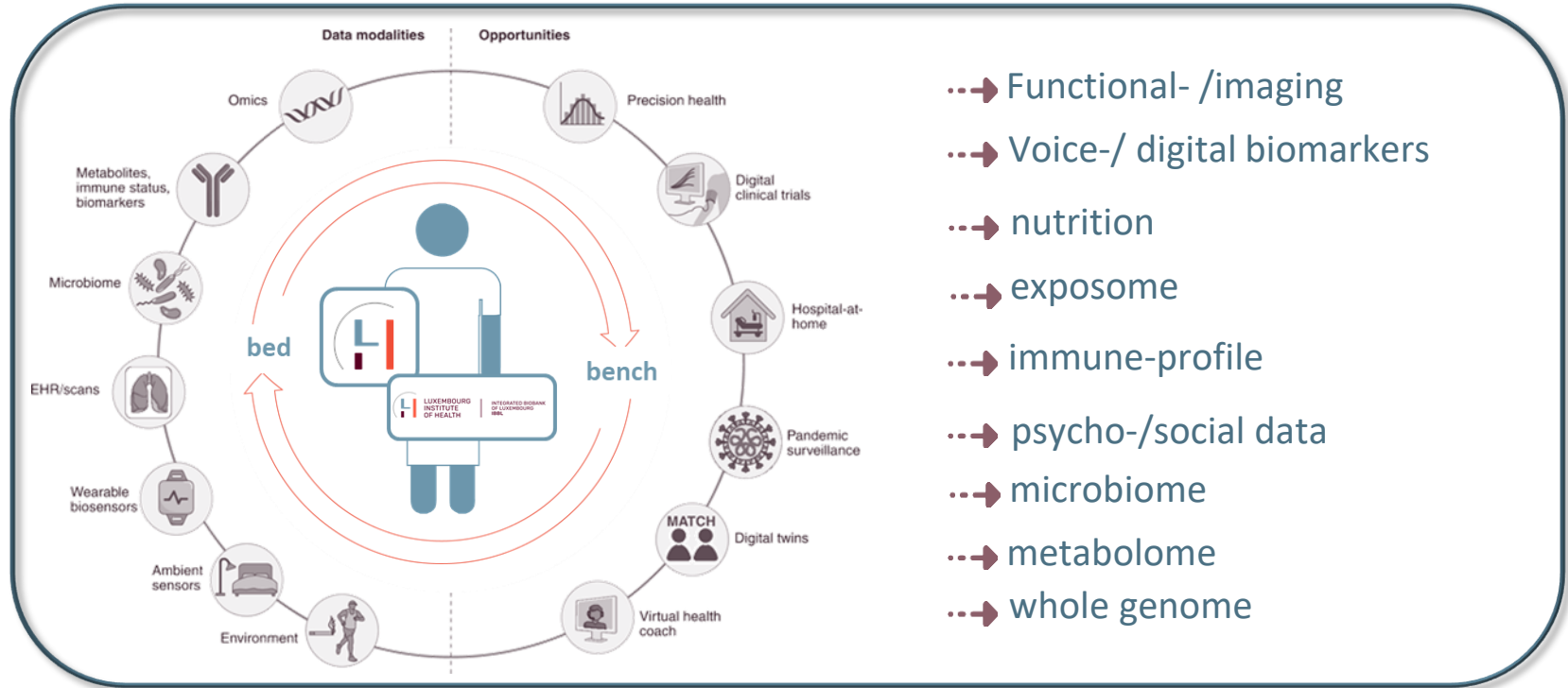
seamless integration of all stakeholders

Transborder interoperability



nucleating a European federated data space

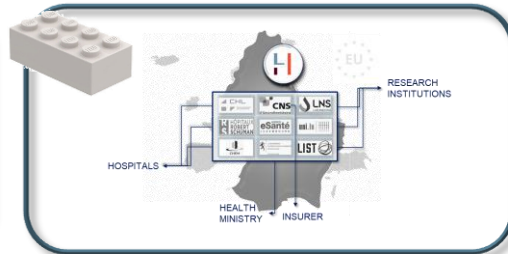
Pivot toward real world data beyond “-genomic”



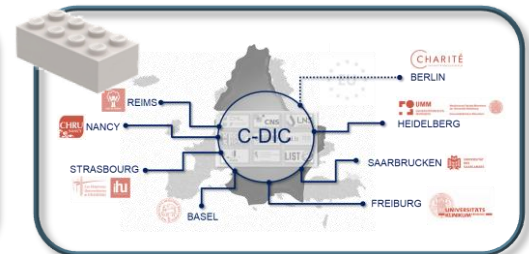
Integrating Luxembourg's Digital Strategy...



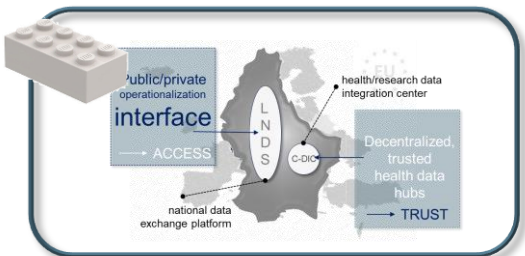
standardized data production



internal data interoperability



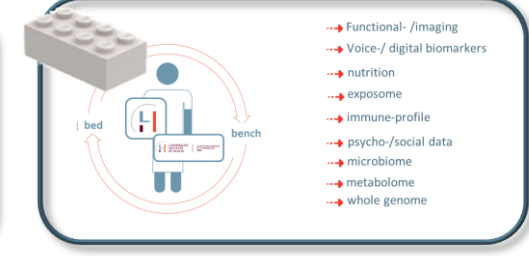
transborder interoperability



cross sector regulated access



shared clinical trial platform

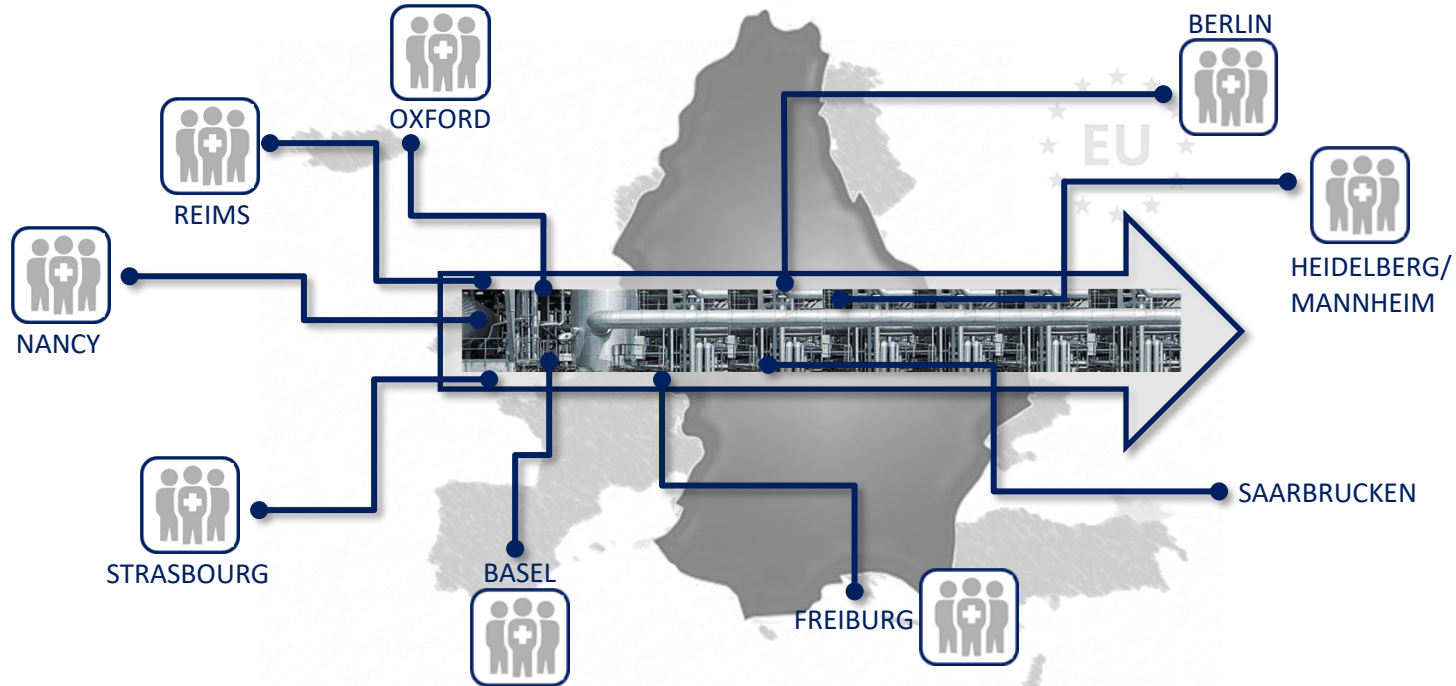


multi-modal data

a need to amortize the investments



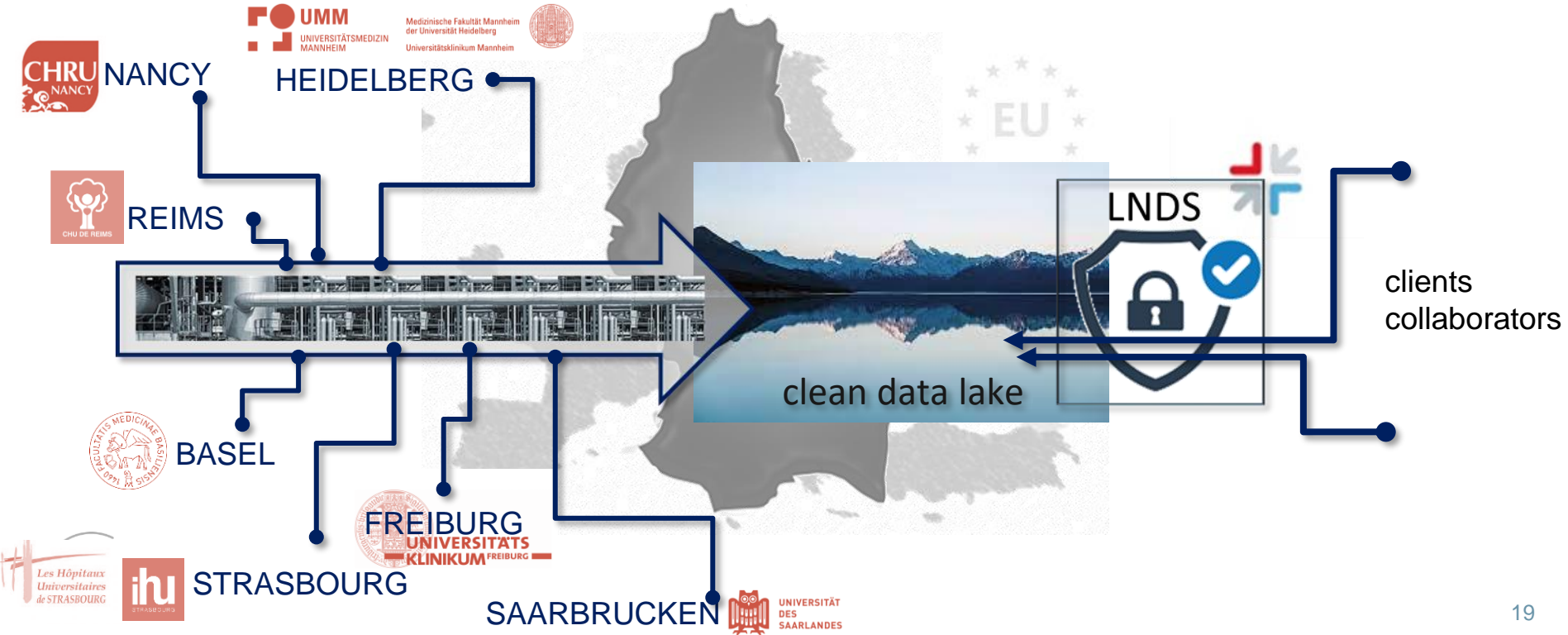
.....linking up to real world data in the heart of Europe



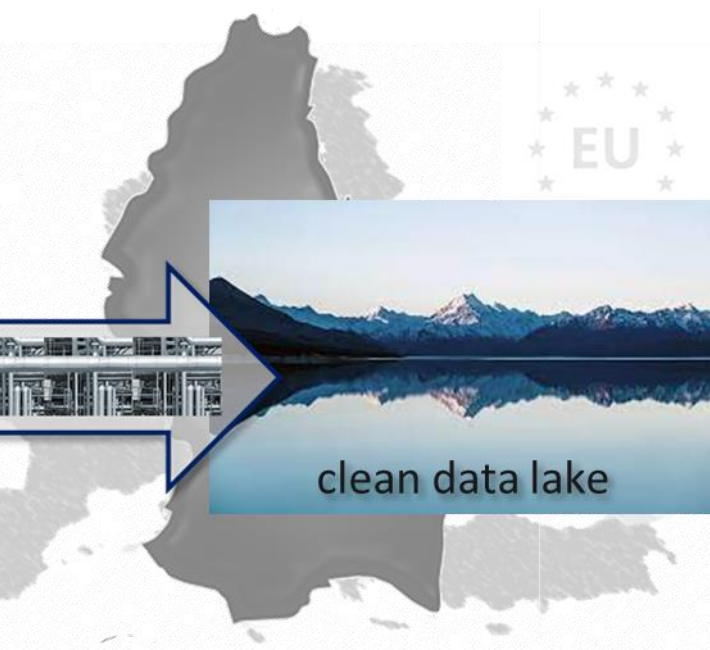
Standardized and quality controlled patient data for personalized medicine



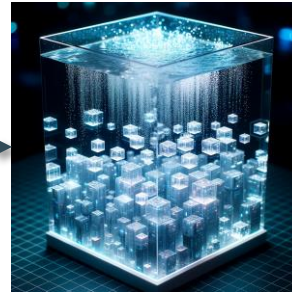
Integrating Luxembourg's Digital Strategy



Digital Strategy towards deep digital phenotyping (DDP)



clean data lake



- Connected med. devices
- Wearables
- Social media
- Digital footprint
- Digital biomarkers
- **Real-world data**



- Biological
- Genetic
- Omic
- Clinical
- eHealth records
- **Biomedical data**

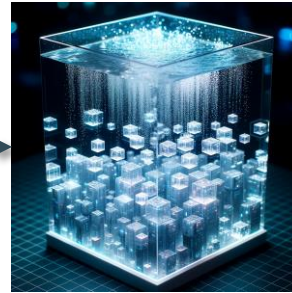
feature extraction & combination

DDP



Digital Strategy towards deep digital phenotyping (DDP)

new & digital: fast, economic



- Connected med. devices
- Wearables
- Social media
- Digital footprint
- Digital biomarkers
- **Real-world data**

train A.I. algorithms

“digital avatar”



- Biological
- Genetic
- Omic
- Clinical
- eHealth records
- **Biomedical data**

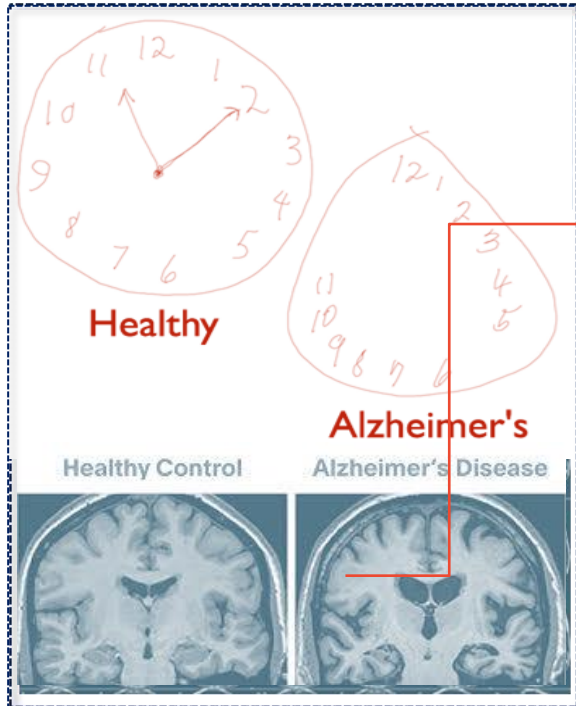
*classical, biomedical/clinical
slow, expensive*

reference platform

clean data lake



A.I. in Healthcare

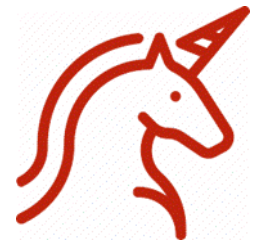


digital cognitive assessment
(15min)

95% accurate,
early detection of
Alzheimer's disease



LINUS HEALTH

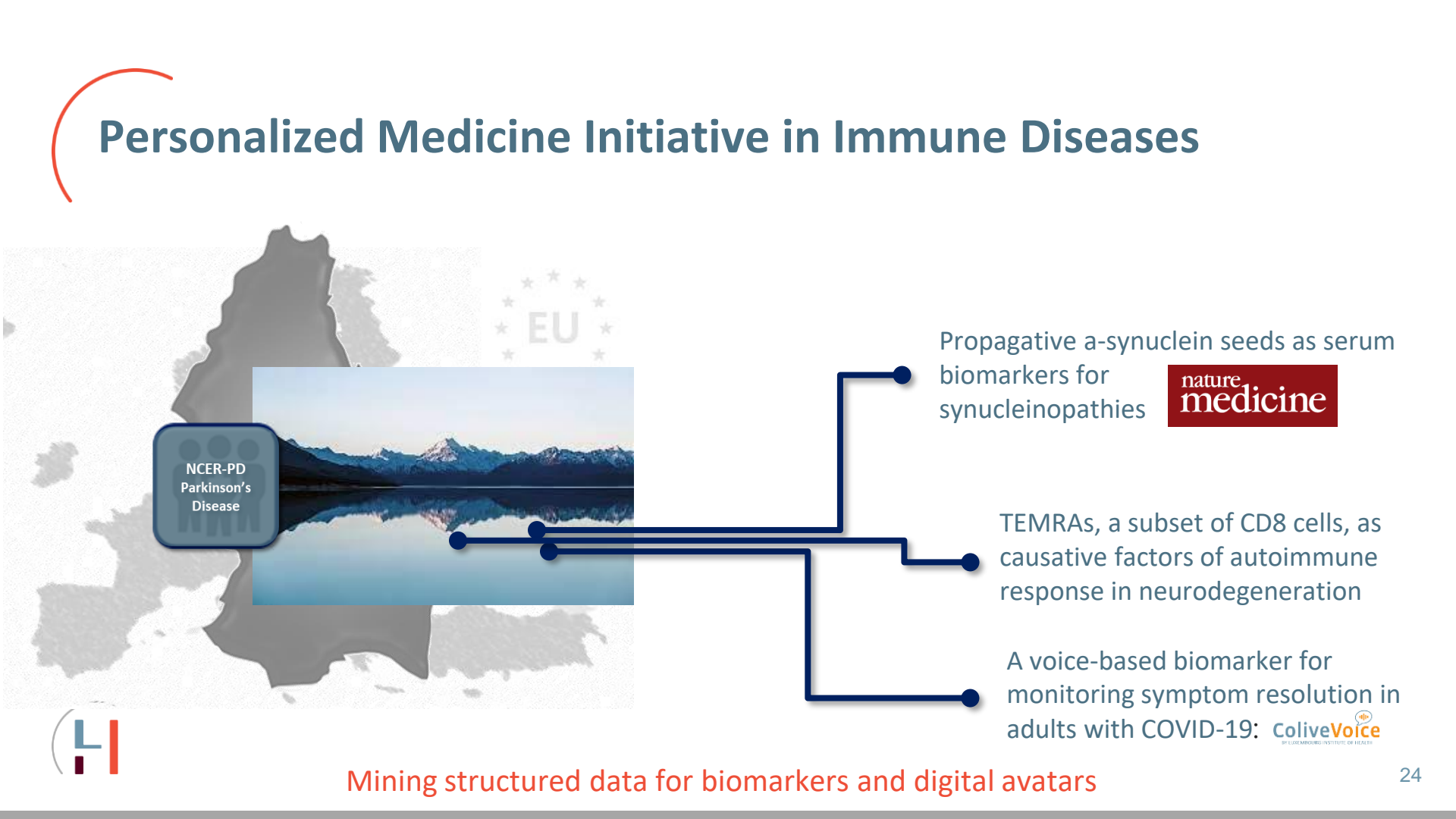




Early results and benchmarks for LIH strategy



Personalized Medicine Initiative in Immune Diseases



NCER-PD
Parkinson's
Disease

Propagative α -synuclein seeds as serum biomarkers for synucleinopathies

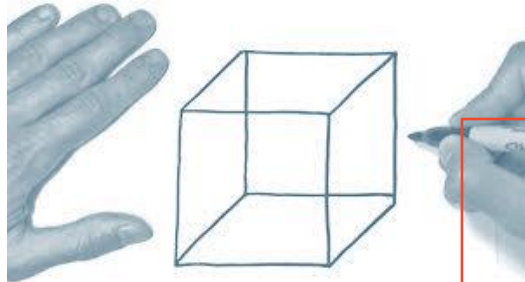
**nature
medicine**

TEMRA, a subset of CD8 cells, as causative factors of autoimmune response in neurodegeneration

A voice-based biomarker for monitoring symptom resolution in adults with COVID-19: **coliveVoice**
BY LUXEMBOURG INSTITUTE OF HEALTH

Mining structured data for biomarkers and digital avatars

Personalized Medicine Initiative in Immune Diseases



standardized blood test

Propagative α -synuclein seeds as serum biomarkers for synucleinopathies

nature
medicine



digital cognitive assessment

early detection of
Parkinson's disease



Personalized Medicine Initiative in Immune Diseases



Propagative a-synuclein seeds as serum



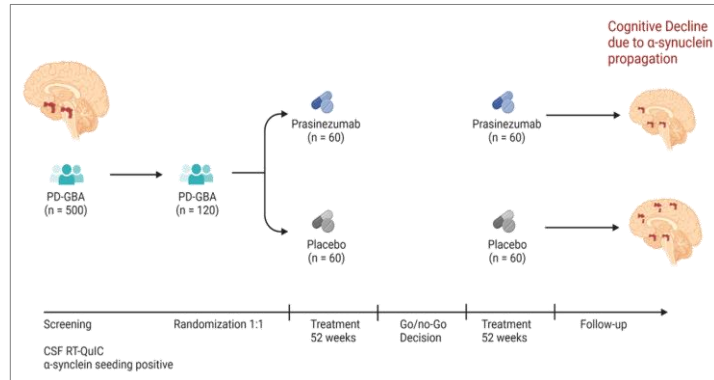
Collaborations with industry and NGOs

Valorisation on 'trial-ready' deep-phenotyped cohorts

➤ Emerging collaboration with Roche Pharmaceuticals



- Support of a MJFF-funded multicentre- trial on precision medicine in patients with GBA mutations

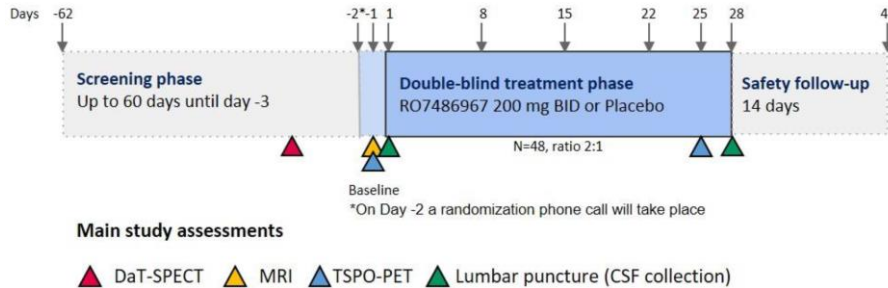


Valorisation on 'trial-ready' deep-phenotyped cohorts

➤ Emerging collaboration with Roche Pharmaceuticals



- First phase I clinical trial for people with Parkinson's disease



1. PROTOCOL SUMMARY

1.1 SYNOPSIS

PROTOCOL TITLE: A PHASE 1B, ADAPTIVE, MULTI-CENTER, RANDOMIZED, DOUBLE BLIND, PLACEBO-CONTROLLED, PARALLEL DESIGN STUDY TO INVESTIGATE THE SAFETY, TOLERABILITY, PHARMACOKINETICS AND PHARMACODYNAMICS OF RO7486967 IN PARTICIPANTS WITH EARLY IDIOPATHIC PARKINSON'S DISEASE

SHORT TITLE First study of RO7486967 in participants with early idiopathic PD



Valorisation on 'trial-ready' deep-phenotyped cohorts

➤ Emerging collaboration with Roche Pharmaceuticals



- Collaboration in the Moonshot Initiative to establish a blood biomarker for neurodegeneration

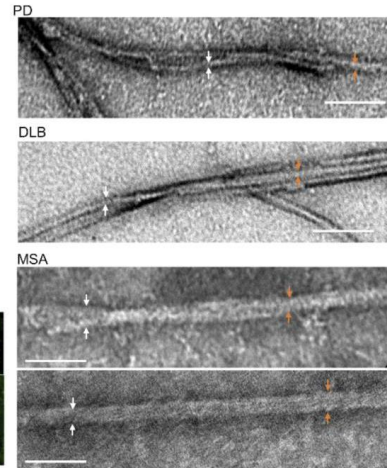
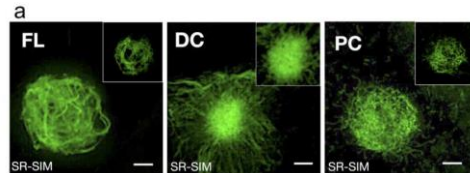
nature medicine



Article

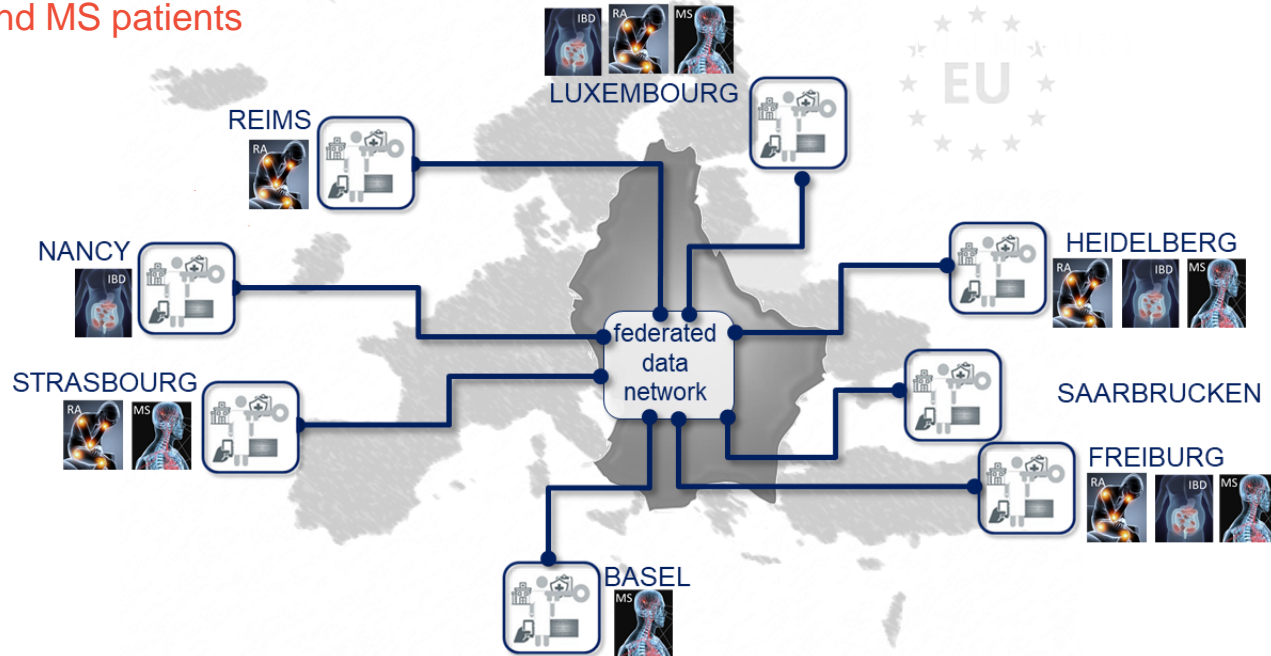
<https://doi.org/10.1038/s41591-023-02358-9>

Propagative α -synuclein seeds as serum biomarkers for synucleinopathies



Personalized Medicine Initiative in Immune Diseases

Clinnova: Precision treatment for IBD, RA and MS patients

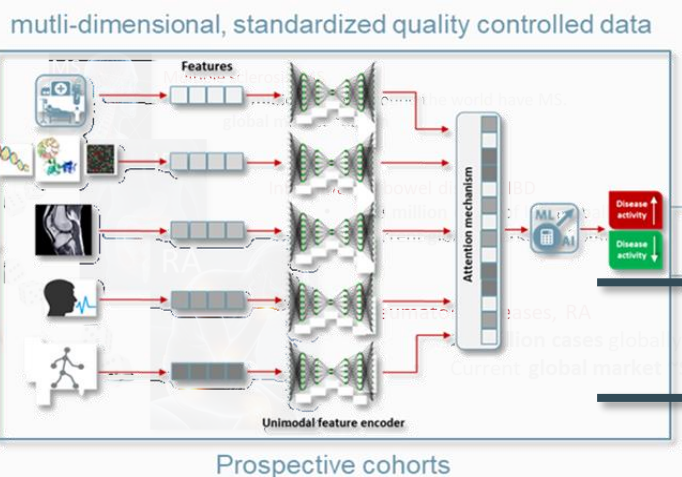
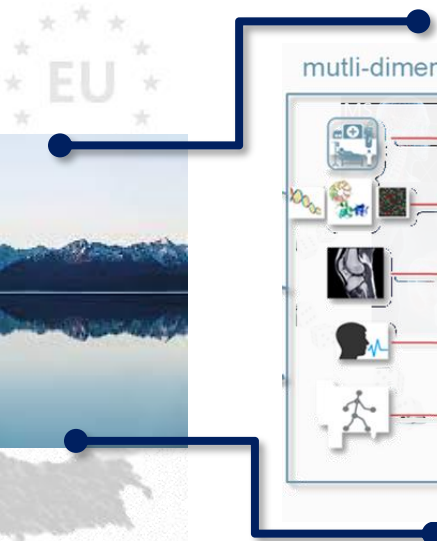


€50Mio funding secured



Personalized Medicine Initiative in Immune Diseases

CLINNOVA
Immune
diseases



right drug for
the right patient

personalized
healthcare

clinical
decision
support

Mining structured data for biomarkers and digital avatars

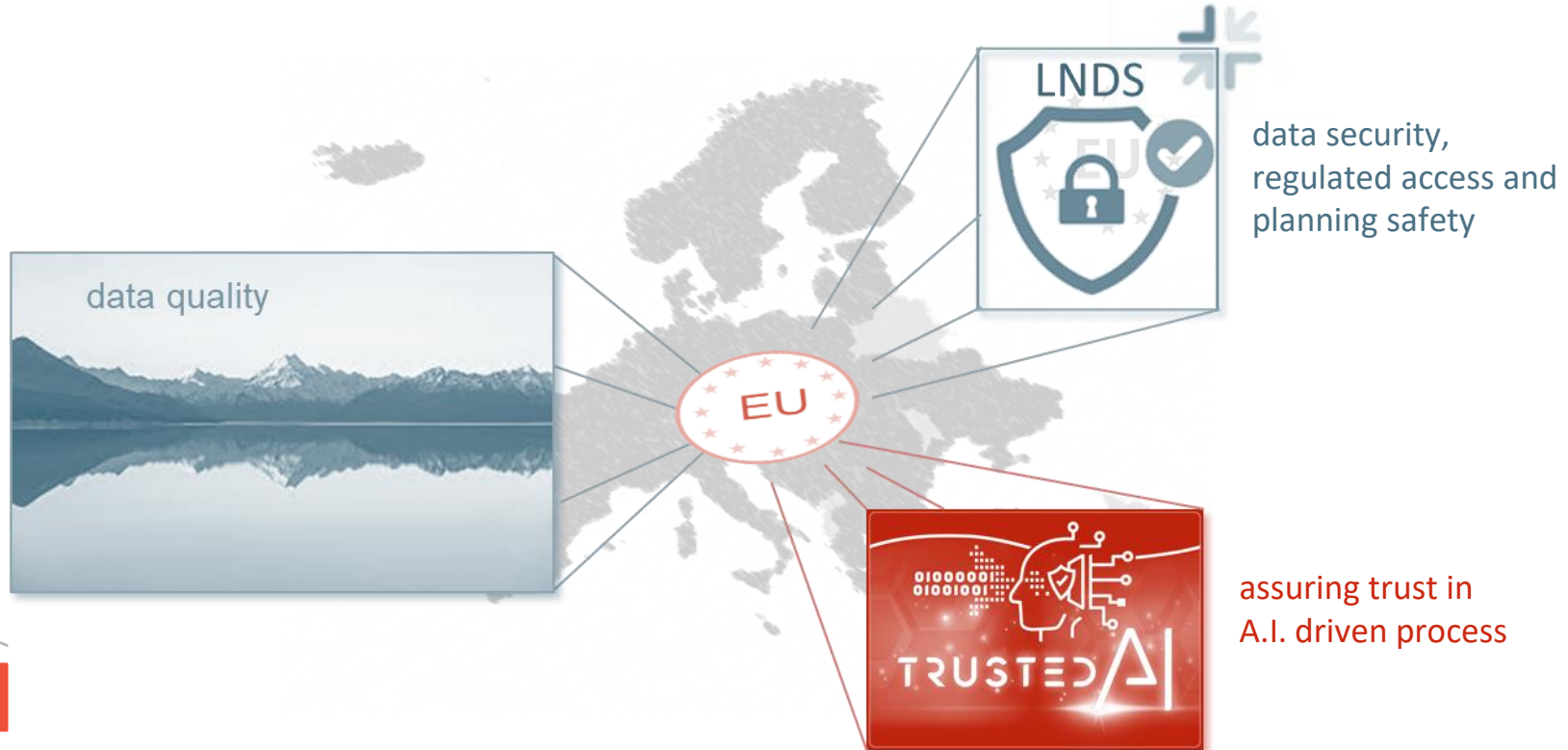




**Are we competitive on an
international level?**

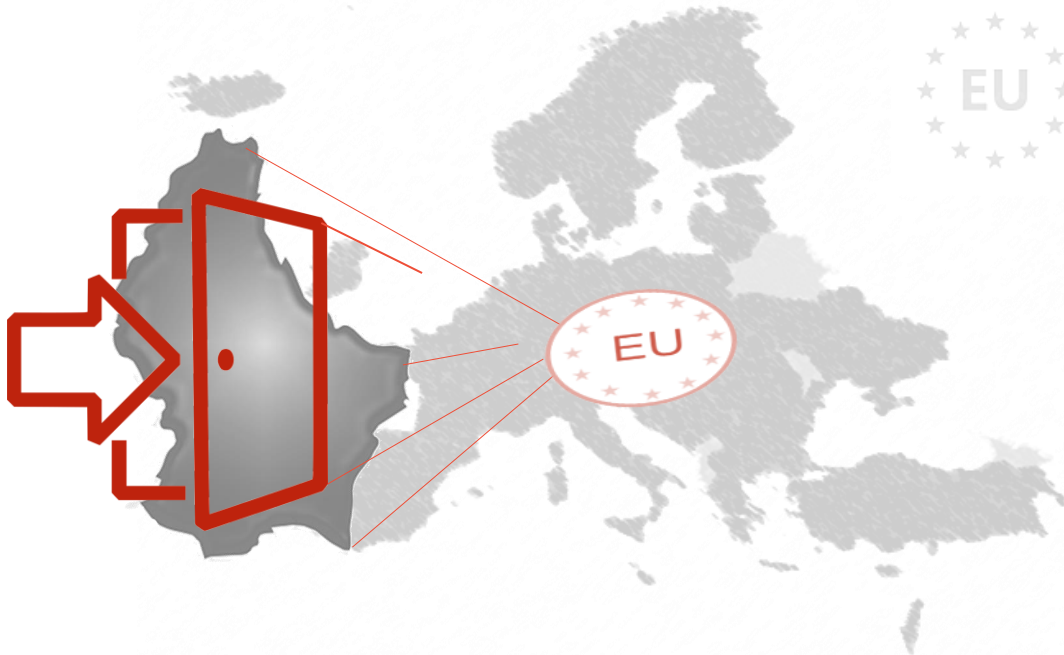


Key factors for Europe's competitiveness in digital health



Luxembourg as a gate to Europe's digital health market

regulated,
secure
access



Luxembourg as a gate to Europe's digital health market

