



# The Role of the Hipervisor Curitiba in Implementing PlanClima's Climate Actions

---

Bruno Gonçalves de Lara  
Technical Coordinator – Hipervisor Curitiba

City of Curitiba  
Institute for Research and Urban Planning of Curitiba | IPPUC

# Institute for Research and Urban Planning of Curitiba | IPPUC

The Institute for Research and Urban Planning of Curitiba (IPPUC) was created in **1965**.

Its objective is to promote **sustainable development**, **integrating urban planning, mobility, the environment**, and **social well-being**.

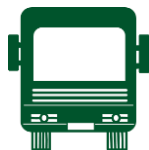
IPPUC develops plans such as the **Master Plan**, which defines guidelines for land use, transportation, infrastructure, and residences in the city.



IPPUC



# Innovations and Projects of IPPUC



## Integrated Transportation System

IPPUC was a pioneer in the creation of the **BRT (Bus Rapid Transit)**, a transportation system that made Curitiba a global reference in sustainable urban mobility.



## Sustainable Development

The institute promotes a balance between economic growth and environmental preservation, with projects focused on creating **urban parks**, green areas, and resilient infrastructure.



## Innovative Urbanism

A pioneer in the **urban zoning** of Curitiba, integrating residential, commercial, and industrial areas harmoniously, ensuring quality of life and environmental preservation.

# Sustainable Development and the Creation of PlanClima

## Sustainable Vision

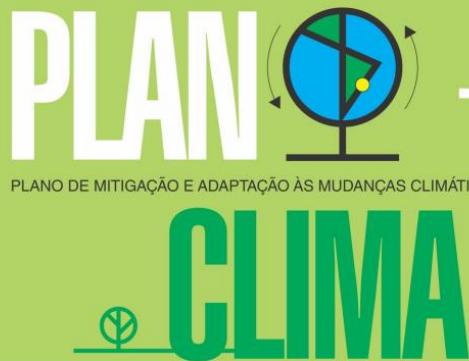
IPPUC's approach to sustainable development led to the creation of PlanClima, a strategic plan to mitigate and adapt Curitiba to climate change.

## Shared Coordination

PlanClima is jointly coordinated by **IPPUC** and the **Municipal Secretariat of the Environment (SMMA)**, integrating urban planning and sustainability policies.

## PlanClima's Goal

To make Curitiba a **carbon-neutral city by 2050**, increasing urban resilience to climate risks and promoting the sustainable use of natural resources, such as renewable energy and sustainable mobility.



DEZEMBRO 2020

# Alignment of PlanClima with International Agreements



## Sustainable Development Goals (SDGs)

PlanClima is aligned with SDG 13 (Climate Action) and other goals from the United Nations 2030 Agenda, such as clean energy and sustainable cities.



## Paris Agreement

Curitiba follows the commitments of the Paris Agreement, aiming to limit the global temperature increase to 1.5°C.



## C40 Cities

The city is part of the C40 Cities, which brings together major global cities committed to climate action, receiving technical support to plan and implement climate actions according to international best practices.

# Priority Actions of PlanClima

PlanClima identifies **20 priority actions** for Curitiba, distributed across **5 Strategic Sectors**:



## ENVIRONMENTAL AND URBAN QUALITY

Maintenance of ecosystem services and promotion of environmental services in urban areas, equitably distributing the inclusive wealth of the city.



## ENERGY EFFICIENCY

Incentive to renewable energy and building efficiency.



## SOLID WASTE AND WASTEWATER

Management of solid waste and wastewater, encouraging production and conscious consumption, continuous improvement in the collection, treatment and final disposal of generated waste.



## SUSTAINABLE URBAN MOBILITY

Promotion of urban mobility services in Curitiba with greater attractiveness to public transit, energy efficiency, and reduced circulation of individual vehicles.



## URBAN HYPERSVISOR AND INNOVATION

Establishing a data-driven culture to manage services in real time, planning long-term policies and encouraging innovation.





# PlanClima Implementation



## CURITIBA MORE ENERGY PROGRAM

- Caximba Solar Pyramid
- 29 de Março Palace
- Botanical Garden's Four Seasons Gallery
- Hydroelectric Power Station Nicolau Kluppel – Barigui Park

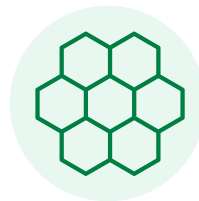


## SUSTAINABLE URBAN MOBILITY PROGRAM

- Better Walking and Cycling Plan
- Inter 2 and East-West BRT
- Electrification of the bus fleet
- Structuring the new Transit System Concession



# PlanClima Implementation



## SUSTAINABLE URBAN MOBILITY PROGRAM ENVIRONMENTAL PRESERVATION AND SOLID WASTE

- 100 Thousand Trees
- Honey Gardens
- Community composting
- Disposal of waste to cement plants to be used as RDF (refuse-derived fuel)



## ADAPTATION AND RESILIENCE

- Water Reserve of the Future
- Environmental Education “Leaves Family”
- Climate Risk Management Bairro Novo do Caximba
- Urban Farm and Community Urban Agriculture Crops
- Curitiba against Floods
- Disaster Prevention Alert and Alarm System – SisAAPrev





# Creation of an Urban Hypervisor

## Action 19 of PlanClima

The **Hipervisor Curitiba** is part of Action 19 of PlanClima, which aims to develop a real-time monitoring platform for climate management. Currently, the Hipervisor is in the implementation phase.

## Strategic Sector and Climate Transparency

Support technological innovation and real-time data collection, promoting transparency in the execution of climate and urban actions.

## Climate Monitoring and Resilience

The platform will be essential for monitoring climate risks, such as floods and heatwaves, enabling quick and effective responses while increasing urban resilience.



# Creation of an Urban Hypervisor

The **strategic sector Urban Hypervisor and Innovation** aims to establish a **data-driven culture**.

It's possible to:

- Assess the policies' effects
- Identify patterns within the city or in a community
- Perform the integration of the information and make it available to the involved actors
- Facilitate the urban planning and measurement of the climate mitigation and adaptation actions

# Creation of an Urban Hypervisor

- **Action 14:** Intensify monitoring of diseases and vectors related to climate change.
- **Action 15:** Promote actions to control and monitor land use and occupation.
- **Action 16:** Improve the alert system, monitoring, and response to extreme weather events.
- **Action 17:** Develop circular economy strategies within the municipality.
- **Action 18:** Promote environmental education campaigns and behavioral change.
- **Action 19:** Develop and implement the Urban Hypervisor and Data Science unit.
- **Action 20:** Establish governance structures for the implementation and management of PlanClima.



# Technologies Integrated into Hipervisor Curitiba - Municipal Data Lake

The **Hipervisor Curitiba** has started using a **Municipal Data Lake** tool to manage the storage of data from various sources, whether structured or unstructured.

**Centralized  
Storage**

**Big Data  
Analysis**

**Development  
of Artificial  
Intelligence**



# Technologies Integrated into Hipervisor Curitiba - Artificial Intelligence

Using **Artificial Intelligence (AI)** to process and interpret large volumes of city data enables predictive analysis to improve data management, helping to anticipate critical events and continuously monitor the city.

**Faster  
Decision-  
Making**

**Automation of  
Processes**

**Generation  
of Insights**

An aerial view of a city with 3D building models, rendered in a light green color. The buildings vary in height and are arranged in a grid-like pattern, representing an urban environment.

# Technologies Integrated into Hipervisor Curitiba - Georeferencing

Curitiba has a strong georeferencing culture that has been established for many years, utilizing spatial data for urban planning and management. The city already uses the **GeoCuritiba** platform.

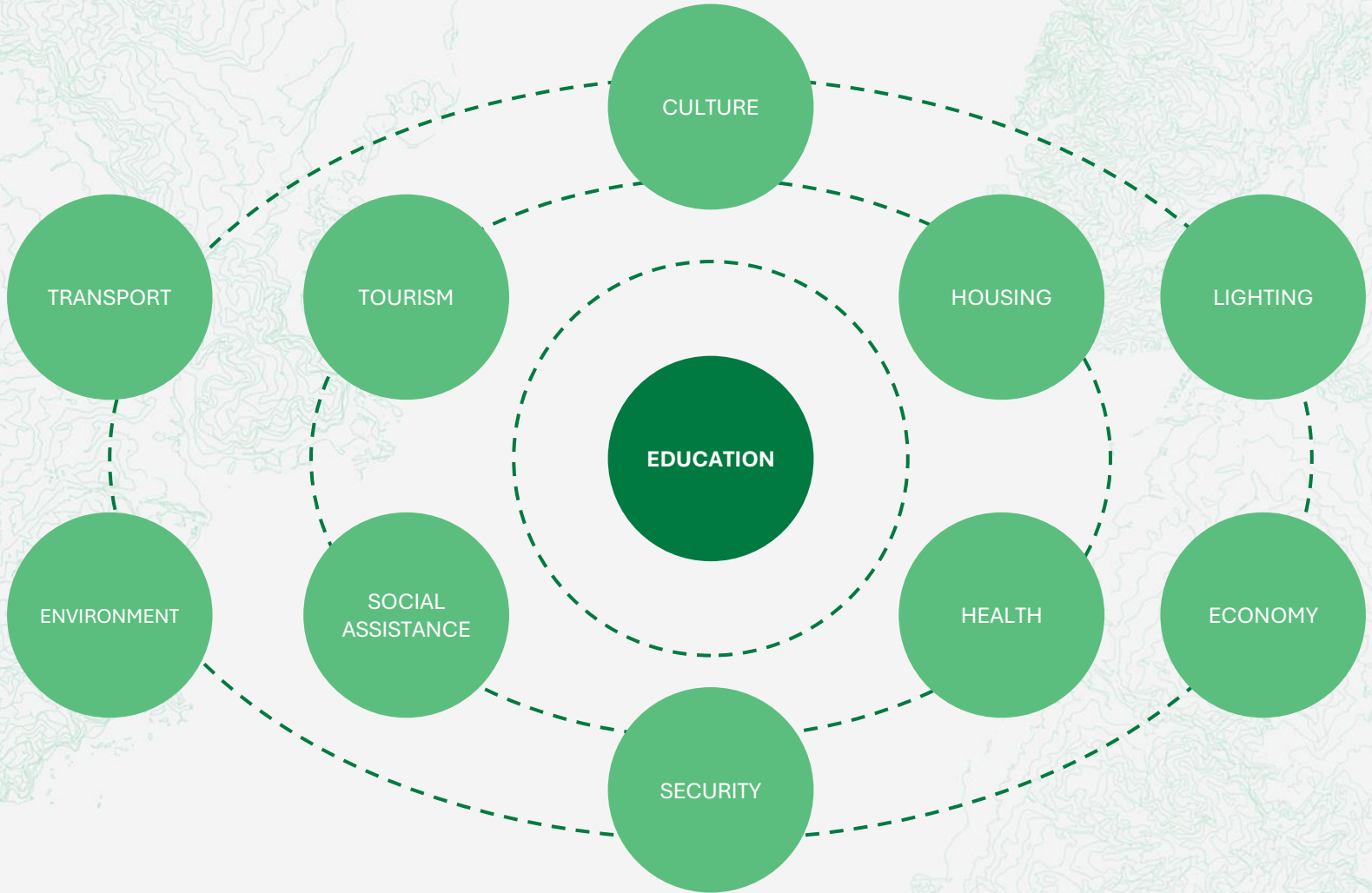
**High-  
Precision  
Georeferen  
ced Data**

**Based on ESRI  
Technology**

**3D Modeling  
of Land and  
Buildings**



# MULTI DOMAIN ANALYSIS



**PROGRESSIVE ANALYSIS**

**DESCRIPTIVE  
ANALYSIS**

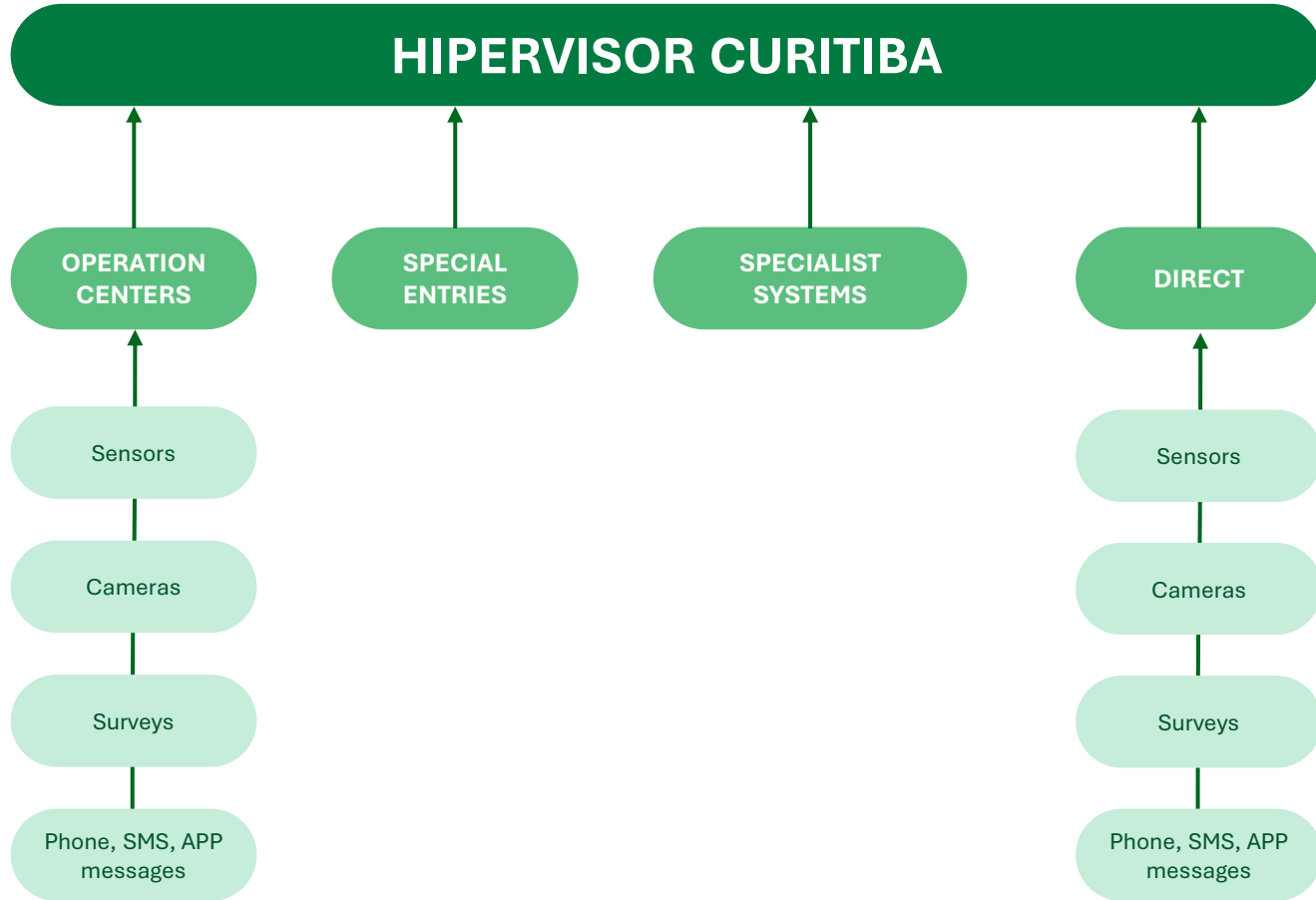
**DIAGNOSTIC  
ANALYSIS**

**PREDICTIVE  
ANALYSIS**

**PRESCRIPTIVE  
ANALYSIS**



**DATA PROTECTION UNITY**





# HIPERVISOR

## DATA PROTECTION UNITY

ALERTS

WARNINGS THAT DEMAND PROMPT RESPONSE FROM SECURITY FORCES, TRAFFIC DEPARTMENT, CIVIL DEFENSE...

PUBLIC INFORMATION

INFORMATION FOR THE SOCIETY

OPEN DATA

ACCESS TO RAW DATA

INTEGRATED ACTION

COORDINATED ACTIONS TOWARDS A FULL ANSWER TO AN EVENT

ACCOUNTABILITY

LEGAL, FORMAL AND GENERAL REPORTS

STRATEGIC INFORMATION

DASHBOARDS FOR HIGH LEVEL DECISION MAKERS

MONITORING AND PLANNING

DATA ANALYSIS, SIMMULATION, SCENARIOS EVALUATION

# HIPERVISOR CURITIBA

## Software



Data platform and system integrator

## Peopleware

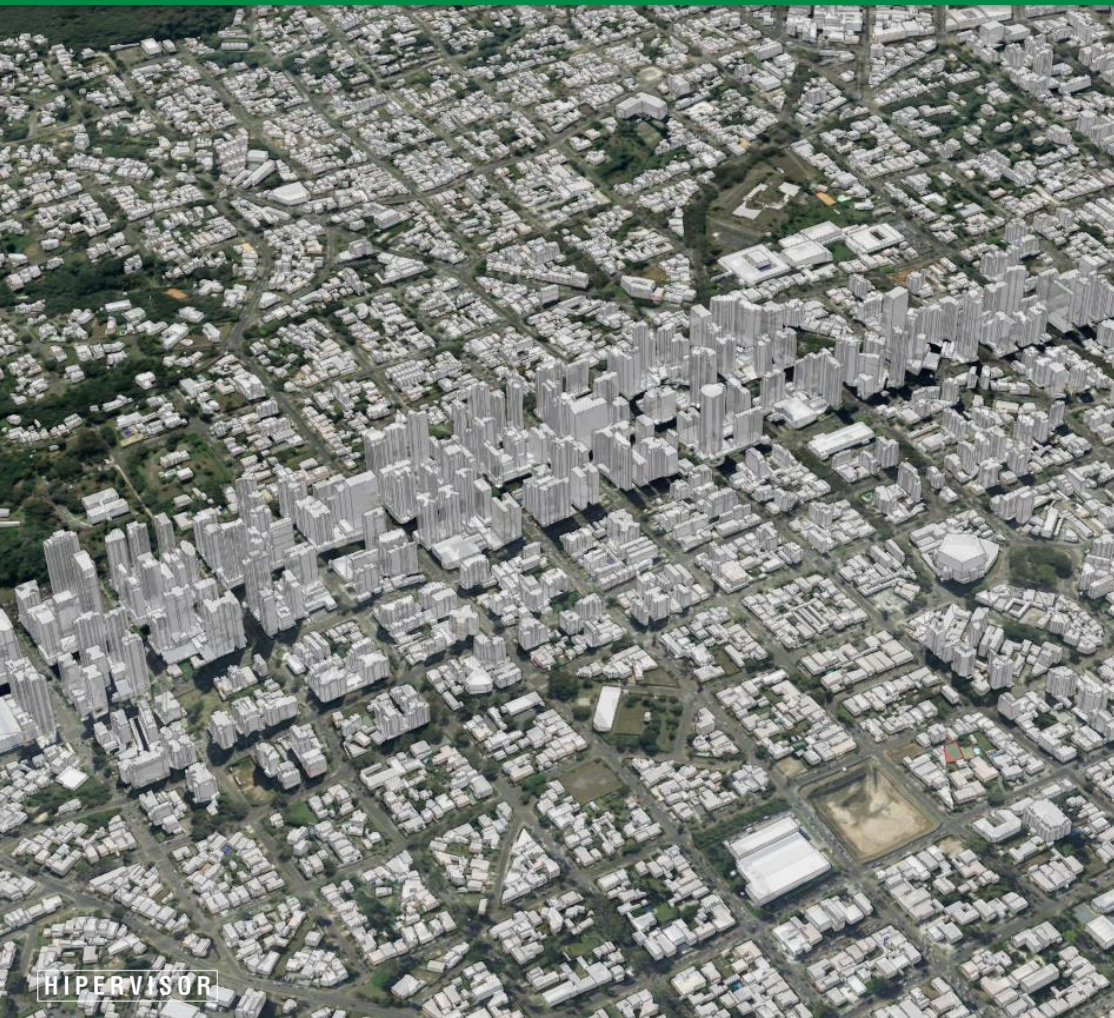


Team specialized in data Science, information analysis and AI algorithms

## Hardware



Monitoring and control center



# Implementation of a Digital Twin by Hipervisor Curitiba

The **Hipervisor Curitiba** is implementing a **Digital Twin** of the city, a virtual model that demonstrates Curitiba's physical and operational conditions in real-time. It is being built on the **GeoCuritiba** georeferencing platform.

- **Level 1:** 3D Digital Model
- **Level 2:** Real Time City Data Integration
- **Level 3:** Actions taken via the Digital Twin





# Thank you!

✉ [hipervisor@ippuc.org.br](mailto:hipervisor@ippuc.org.br)

---

Bruno Gonçalves de Lara  
Technical Coordinator – Hipervisor Curitiba

City of Curitiba  
Institute for Research and Urban Planning of Curitiba | IPPUC